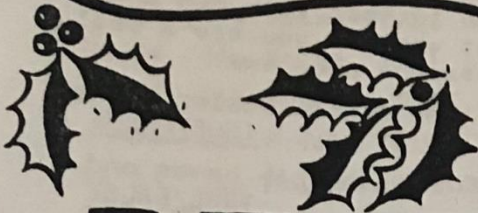


South Eastern Bowling Association

BOWLING NEWS

of the B.T.B.A.



DECEMBER 1967
ISSUE NO. 29.

DEAR SANTA!

Christmas is the season of goodwill but on the British bowling scene it all appears rather one sided at the moment. The differences between BTBA and the proprietors were ironed out some nine months ago but other than a variety of amendments to the BTBA Constitution designed, apparently, to meet the requirements of the proprietors no other changes have been observed.

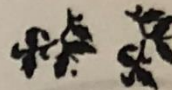
The joint statement issued by the proprietors and BTBA in March this year was to the effect that the TPBA recognised the need for a healthy players association and would closely co-operate with BTBA in order to develop better bowling and more bowlers. The bowlers association have, reluctantly in some quarters, agreed to accept inspection and certification of lanes and equipment by independent surveyors but would seem to be totally unaware of the specifications that the surveyors are actually using. Whether or not their inspection extends to such items as pin spotting, gutter depths and machinery specifications to include the condition of pins, kick back plates, aprons and the like is not known. Whether the surveyors or their employees have ever bowled is also not known and in consequence would they be likely to recognise say, a continuous groove into the pocket that was within specifications?? Are you being protected? We in SEBA do not know.

The certificate issued by the surveyors, Messrs Gooch & Wagstaff of 24/25, Ironmonger Lane, Bank, London, E.C.2. states that the lanes in YOUR centre (Whitstable, Southend and Hoddesdon excluded) conform to the proprietors specifications and to international playing standards. The only international standards are those of the World governing body, F.I.Q., who have already complained that their sanction to the wording used on the certificate has not been given. The TPBA, if they have standards, have not published them.

This state of suspended animation does not instill very much confidence in the bowler and neither does the mandatory regulation of the proprietor's association that their members shall not sanction any tournament that they promote. Even if a member of the TPBA wants a sanction for his tournament he is not allowed to apply for one and has to turn to a local BTBA Area who pretend to run the show. Many proprietors used to promote the BTBA among their leagues but, with a few exceptions, this appears now a thing of the past. The proprietors have duplicated, or attempted to duplicate, nearly every service that your association provides and, ostensibly, gives away their league kits and badges free of charge. That you will pay for the 'service' in the long run, however, there is little doubt and already we hear of a proposal to raise prices to 4/6d for open play and 4/-d for league. The excuse, if it comes about, will undoubtedly be the devaluation of the £ but one must wonder at the cost to the proprietor of the services now given to unsanctioned leagues.

DEAR SANTA, for Christmas we would like a renewed air of truth and confidence. If any differences still remain let them be stated and resolved rapidly. The worst has been over for some time but these niggles persist and could magnify if nothing more is done to jointly promote the sport of tempin bowling. A very MERRY CHRISTMAS.

BE A "BETTER" BOWLER IN 1968



What is the essential difference between a good bowler and a bad bowler? The number of pins he or she knocks down you may say. But a person can have consistently high scores and still be a "bad" bowler. The difference is etiquette. A "good" bowler may knock down a lot of pins but a "better" bowler is one who has etiquette. No one is perfect, but a few bowlers may be using habits that are making them unpopular. Here are twenty questions that will enable you to test your own bowling etiquette. Answer them truthfully to find out whether you are a real paragon on the lanes, just average, or have serious problems:

1. When I arrive at the approach at the same time as the bowler on my right, I always let him or her have the right of way. TRUE/FALSE
2. I always pick up my ball from the ball return with both hands and never by the finger holes. TRUE/FALSE
3. I never use bad language when bowling. TRUE/FALSE
4. I never lose my temper when bowling. TRUE/FALSE
5. I never complain when I, or my team, loses. TRUE/FALSE
6. I usually congratulate the other team when they win. TRUE/FALSE
7. I never take food or drink into the bowling areas. TRUE/FALSE
8. I never use talcum powder on the approach if I find it sticky, so that other bowlers who do not find them sticky, are hindered. TRUE/FALSE
9. I never yell at another bowler just as their approach has started. TRUE/FALSE
10. I never make fun of another bowler who misses an easy spare. TRUE/FALSE
11. I never brag about the high scores I bowl and rarely complain about low ones. TRUE/FALSE
12. I never run in front of another bowler to pick up my ball from the ball return just as they start on their approach. TRUE/FALSE
13. I never get mad and kick the ball return. TRUE/FALSE
14. I rarely complain to the manager about, what I think, are poor scoring conditions. TRUE/FALSE
15. I never use another person's bowling ball without their permission. TRUE/FALSE
16. I never say that I am a better player than someone else. TRUE/FALSE
17. I am always ready to bowl when it is my turn. TRUE/FALSE
18. I never criticise another bowlers bowling form. TRUE/FALSE
19. When I miss a spare, I never complain that someone else distracted me or pretend that I hit my ankle. TRUE/FALSE
20. I never complain that everyone else gets all the 'breaks' and that I never have any luck. TRUE/FALSE

HOW TO SCORE YOUR ETIQUETTE RATING

If you had a perfect score of 20 TRUE you are a Super-duper Bowling Human.

If you had 18 or 19 you're very good and eligible to teach good bowling etiquette.

If you scored between 15 and 17 you're about average,

If you had between 12 and 14 you have a few personal problems that you should get straightened out.

If you had 10 or 11 you are unpopular with nearly everyone in the centre.

If you had less than 10 you should either give the game up or see a psychologist without delay.

(With acknowledgements to "Woman Bowler")

BRITISH TEAM FUND LOTTERY RESULTS

The draw took place at Bexleyheath Bowl on 16th. November. It was supervised by the S.E.B.A. Secretary, Brian Langford and the Bowl Manager, Jack Roe. A member of the Olympic League, who was bowling at the time, drew the tickets.

88702	1st Prize	HONDA MOTOR CYCLE	H.S. PHILPOTT, Gillingham
75226	2nd Prize	BALL, BAG & SHOES	S.E. CLARK, Bexleyheath
83323	3rd Prize	BALL & BAG	J. RICHARDS, Dorking
75484	4th Prize	BALL & BAG	P. WILLMORE, Bexleyheath
75492	5th Prize	WRITE & LIGHT SET	C. ASLETT, Joydens Wood
89698	6th. Prize	DOUBLE CINERAMA TICKETS	E. SUDY, Bedford
81128	7th. Prize	LONG PLAYING RECORDS	R. GASKELL, Ipswich
75300	8th Prize	LONG PLAYING RECORDS	P. HADLEY, Swanley

THE 1968 'NATIONALS'

The 7th. Annual BTBA National Championships will take place at the Granada Bowl, Belle Vue, Manchester on Friday, Saturday and Sunday, March 15th, 16th & 17th 1968. Provision for additional play the following weekend will also be made should the size of the entry require this. Keep this weekend free and think about forming your teams now.

S.E.B.A. TOURNAMENTS

Entry Forms will be shortly be available both for the 4th. Annual Blue Riband 5-Man Team Tournament and for the 1st. Annual 600 Club Tournament. The Blue Riband will be at Chatham on Sunday, 18th February following the 600 Club Event at Whitstable on 4th. February.

NEW LEAGUE FOR BEXLEYHEATH

A new scratch doubles league is forming at Bexleyheath to roll at 10a.m. on Sunday mornings commencing on 7th. January. The league looks like being a fully sponsored one and interested teams should book a place early. See Roger Blyth for further details.

S.E.B.A. EXECUTIVE OFFICERS TO MANAGEMENT

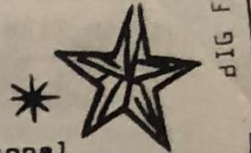
No fewer than three S.E.B.A. Executive Officers are now centre managers. Ex Presidents Ray Price and Brian Morrison are managing Piccadilly and Edware respectively and Brian Snook has taken over Whitstable from Peter Field who has moved to Humber Bowl, Crawley. The very best of luck fellas and you can be certain of S.E.B.A. cooperation at any time.

Following these changes a reorganisation of the Executive has taken place and your officers, subject to continuance at the next A.G.M. are as follows:-

President	JIM INGRAM	Whitstable
1st Vice President	TOM BALLINGALL	Cliftonville
2nd Vice President	RON GLASSON	Chatham
3rd Vice President	ALAN CHAPMAN	Bexleyheath
Secretary/Treasurer	BRIAN LANGFORD	
Awards Secretary	JOHN BUSHELL	Cliftonville
Executive Officers	MALCOLM HOGG	Southend
...
...
...
...
...
...
(Ex Officio)	BRIAN MORRISON	Bexleyheath



These officers are there to help YOU. Advise them of any problem you may encounter and for advice upon league, tournament or any other matter in relation to tenpin bowling. USE YOUR OFFICERS.



CHRISTMAS TOURNAMENTS

Two years ago we published details of special seasonal tournaments that could be operated by leagues and indicated whether they would be covered within the normal league sanction. A number of members have asked for the information to be repeated and from our December 1965 issue here it is:-

"Get Acquainted" Doubles

Accept entries from an equal number of men and lady bowlers. Luck of the draw will determine the partners or, what might be better, match the sexes on the basis of their respective averages, i.e. the highest average male bowler with the lowest average female. The event could be run on either a scratch or handicap basis and would be covered by the league sanction.

Alibi Tournament

This is designed for the bowlers who always complain that they have one bad game. The tournament simply consists of one 4 game series in which each participant is allowed to drop the game with the lowest score from his or her series. The league sanction would cover the tournament except that only the first three games rolled would be allowed for a series record or award.

Head Pin Tournament

When you miss the headpin you have in fact missed half the lane! A good test of your ability is this tournament where if you miss the head pin with the first delivery the frame scores zero. If you hit the headpin with the first ball you score in the normal way. This one is not sanctionable.

"Scotch" Doubles

There are two types of Scotch Doubles:

1. The partners take alternate shots regardless of the situation.
2. One bowler throws the first ball in each frame and the partner rolls the second if the first ball does not strike. Should the first ball strike, however, the partner then leads off until he in turn strikes, when the positions are again reversed. This event is not sanctionable but can be good fun and, of course, the bowling rate is such that 6 games can be bowled for the price of 3.

3 X 6 X 9 Tournament

This involves a regular game with the exception that each bowler is presented with 3 free strikes in the 3rd, 6th and 9th frames of each game. By actually bowling 3 frames less per game a reduced bowling rate can conceivably be obtained and the 4 games could be played for the price of 3. Not sanctionable.

Low Game

The object is to score as little as possible but to keep the ball on the lane. If the first ball in the frame is a gutter ball this counts as a strike and no second ball is rolled. If you gully your second ball having knocked down at least 1 pin with the first delivery this counts as a spare. A "perfect game" is 20 pins but of course a sanction is not possible.

Numbered Pin Game

The highest score wins. The pin for the number of each frame, i.e. the headpin in the first frame, the number 2 pin in the second frame etc, must be knocked down for any score in that frame to count. If, for example, your first ball takes 7 pins but leaves the headpin standing you score nothing on this delivery. If your second ball, however, takes the headpin and the others left standing with it, the score for the frame is "3". It is NOT a spare. Apart from this strikes and spares count as normal provided the "numbered pin" is taken with the first ball. Not sanctionable.

Normal events for high games and series etc

Any properly scored tournament run within the normal league schedule and played in accordance with BTBA rules is automatically covered by the league sanction and no special application for a tournament sanction is required. Have fun!

BIG FOUR PICKUP

LES COLE bowling in the Cliftonville Husband & Wife League on 28th. October earned himself a BTBA Chevron when he converted the 4-6-7-10 Split. Well done Les.

On the subject of splits we have been hearing of a few wierdies lately but nothing to top the 'Big Six' left at Bexleyheath by TONY KITCHING bowling in the Roundtable League. Somehow Tony, who bowls a big left handed bender, found himself facing the 2-4-6-7-9-10! When the laughter died down Tony proceeded to convert it and went on to a 206 game that formed part of the 640 trios record for The Committee shown in the Area Hi's!

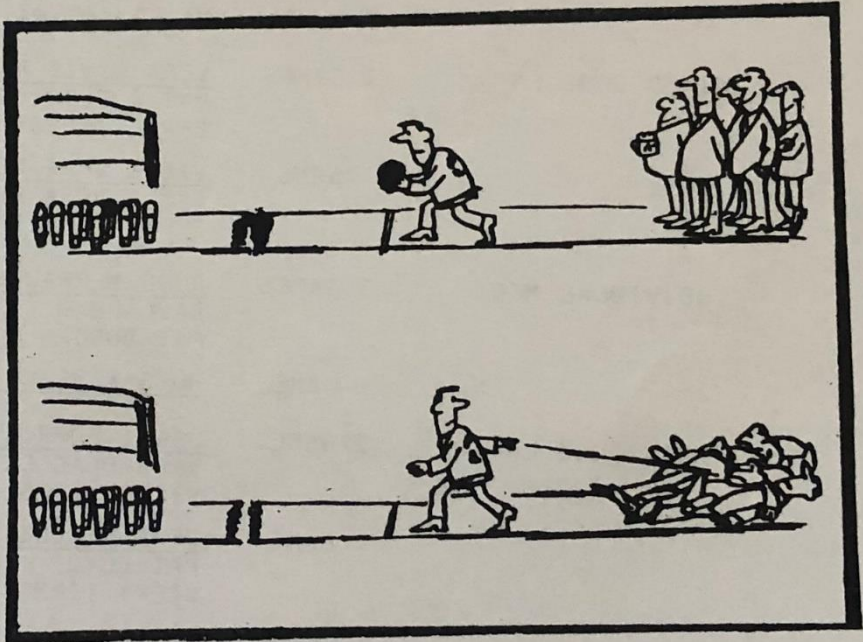
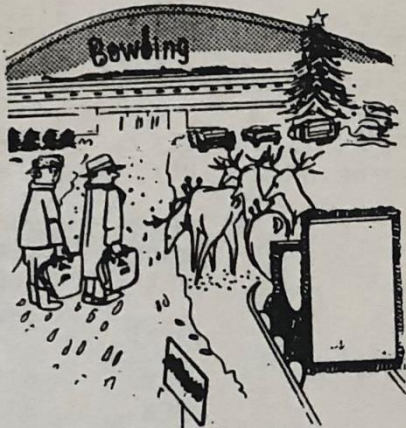
EXCHANGE & MART

Brunswick Fibre Bag, 15lb Kingpin Ball and white, size 8 shoes, £10 the lot. Contact manager Bexleyheath.

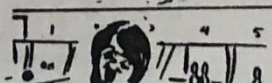
12lb Wildcat Manhattan Ball. Nearly new. £8. Contact Trudi Searles or the management Bexleyheath.

Seasonal Smiles!

According to a recent survey, provided you live to be seventy, you will have spent 30 years asleep, one year on the telephone, five years shaving and dressing, five months tying shoe laces, seven years travelling to work - AND THREE YEARS WAITING FOR THE GUY ON THE NEXT LANE TO BOWL!



"Hold it! Hold it!!"



"This beats golf ... I haven't lost a single ball."



"TAKE THE DOG OUT SHE SAYS - IN THIS WEATHER!"

AREA HI'S!

up to and including 30th. November.

5 PERSON TEAM	3 GAMES	<u>THE SKI BOLTS</u>	CHAT	2805
	1 GAME	<u>THE SKI BOLTS</u>	CHAT	957
4 PERSON TEAM	3 GAMES	<u>WEMBLEY ALL STARS</u>	HODD	2376
		<u>WETHERSFIELD "A"</u>	HODD	2345
		<u>THE MINI MEN</u>	HODD	2269
	1 GAME	<u>WETHERSFIELD "A"</u>	HODD	861
		<u>WEMBLEY ALL STARS</u>	HODD	853
		<u>THE MINI MEN</u>	HODD	775
3 PERSON TEAM	3 GAMES	<u>THE POTMEN</u>	BEX	1726
		<u>TRIUMVER</u>	BEX	1705
		<u>THE COMMITTEE</u>	BEX	1697
	1 GAME	<u>THE COMMITTEE</u>	BEX	640
		<u>THE BEATALLS</u>	CHAT	634
		<u>THE SKI BOLTS</u>	CHAT	629
2 PERSON TEAM	3 GAMES	No Claim Yet Made - Qualification		1150
	1 GAME	No Claim Yet Made - Qualification		400
MIXED DOUBLES	3 GAMES	<u>VERA & VIC PEACOCK</u>	BEX	1160
		<u>PAT & PETE BOYD</u>	BEX	1130
		<u>BERYL & FRED SHRIMPTON</u>	BEX	1124
	1 GAME	<u>VIC & VERA PEACOCK</u>	BEX	436
		<u>VIC & VERA PEACOCK</u>	BEX	430
		<u>BERYL & FRED SHRIMPTON</u>	BEX	415
INDIVIDUAL MEN	3 GAMES	<u>RUSS MERBAUGH</u>	HODD	688
		<u>DAVE POND</u>	HODD	684
		<u>PAT DUGGAN</u>	BEX	680
	1 GAME	<u>RUSS MERBAUGH</u>	HODD	278
INDIVIDUAL LADIES	3 GAMES	<u>JANET MORRISON</u>	BEX	619
		<u>VERA PEACOCK</u>	BEX	616
		<u>VICKY TIMMS</u>	CLIF	616
	1 GAME	<u>VERA PEACOCK</u>	BEX	235
		<u>PAT BOYD</u>	BEX	234
		<u>VICKY TIMMS</u>	CLIF	222
INDIVIDUAL JUNIORS	3 GAMES	No Claim Yet Made - Qualification		525
	1 GAME	No Claim Yet Made - Qualification		200

600 Club

LATEST QUALIFIERS

VICKY TIMMS CLIFTONVILLE
 LES COLE CLIFTONVILLE
 RON GLASSON CHATHAM

200 Club

SONIA MORELLI CLIFTONVILLE
 BILL HORNSEY CLIFTONVILLE
 ERIC KEEN CLIFTONVILLE

X/X

STOP PRESS

VERA PEACOCK of Bexleyheath has smashed the area record for ladies series with a great 658 that included a 267 game.....